



Durham Twist

48 COLOURS • 10 STRIPES

2 QUALITIES • 3 WIDTHS



To see this carpet in your room
Visualise it at hughmackay.com
Sample service available.

visualizeit

Change the way you choose!

Durham Twist

Colours



Colours: Elephant



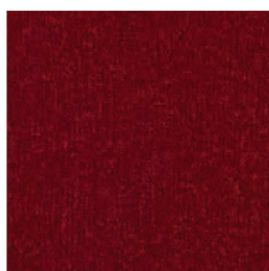
Colours: Old Gold



Colours: Terracotta Pot



Colours: Chiltern Brick



Colours: Bordeaux



Colours: Scarlet Ribbon



Colours: Peaceful Glade



Colours: Olive Garden



Colours: Pistachio



Colours: Alpine Meadow



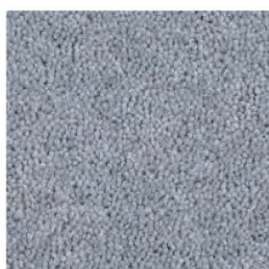
Colours: Light Mauve



Colours: Polaris Blue



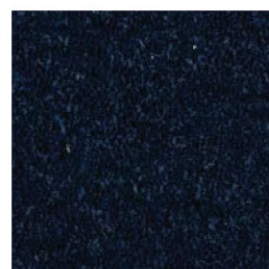
Colours: Lava



Colours: Airforce Blue



Colours: Morning Sky



Colours: Navy Blue



To see this carpet in your room
Visualise it at hughmackay.com
Sample service available.



Change the way you choose!

Durham Twist

Naturals



Naturals: Porridge



Naturals: Raffia Cream



Naturals: Twine



Naturals: Spring Wheat



Naturals: Papaya



Naturals: Manuka Honey



Naturals: Hessian



Naturals: Sapwood



Naturals: Tranquil Taupe



Naturals: Wild Mink



Naturals: Pale Oak



Naturals: Oatmeal



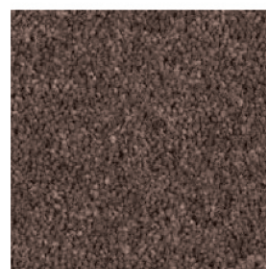
Naturals: Wild Rice



Naturals: Dover White



Naturals: Ermine Stone



Naturals: Mocha



To see this carpet in your room
Visualise it at hughmackay.com
Sample service available.



Change the way you choose!

Durham Twist

Elements



Elements: Moonshine



Naturals: Creamy Grey



Elements: Wishbone



Elements: Weathered Birch



Elements: Mother of Pearl



Elements: Ash Blonde



Elements: Sixpenny Bit



Elements: Silver Satin



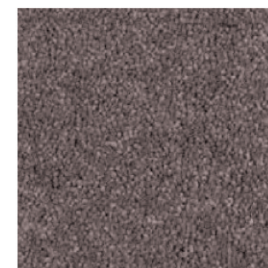
Elements: Winter Mist



Elements: Glacial Storm



Elements: Koala



Elements: Beluga



Elements: Nickle



Elements: Honister Slate



Elements: Mercury



Elements: Pencil Point



To see this carpet in your room
Visualise it at hughmackay.com
Sample service available.



Change the way you choose!

Durham Twist

Stripes



Stripes: Cha Cha Cha



Stripes: Paso Doble



Stripes: Jive



Stripes: Foxtrot



Stripes: Mambo



Stripes: Bosa Nova



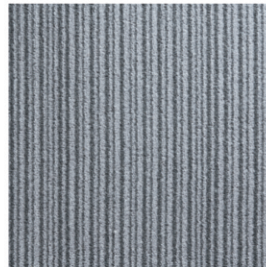
Stripes: Waltz



Stripes: Tango



Stripes: Samba



Stripes: Rumba



To see this carpet in your room
Visualise it at hughmackay.com
Sample service available.



Change the way you choose!

Durham Twist

Specification Details

Specification	
Pile Content:	80% Wool, 10% Polypropylene, 10% Meltbond
Construction:	1/8th Gauge. Tufted
Backing:	Action Back
Width:	4 & 5 Metre (Stripes available in 1m, 4m & 5m)
Pile Weight:	1390g/m2 (40oz yd2), 1770g/m2 (50oz)
Pile Height:	7mm
Origin:	UK / Yorkshire
Warranty:	10 Years Wear
Tog:	40oz 1.37, 50oz 1.43

Tested for;

Suitability

40oz: Heavy Domestic / Heavy Contract.

50oz: Extra Heavy Domestic / Heavy Contract.

Suitability for Stairs

Yes, in domestic locations. Use an approved stair nosing in contract locations.

Flammability

BS4790 (Hot metal nut): BS5287 - Low radius of ignition

Methenamine pill: BS ISO6925 - Pass

Nordic Fire Test (NT007): The carpet meets the requirement of Class L - Nordic Ministry of the Environment DIN4102 part 1 (IFB) - Class B1

Insect Resistant: Yes

Static Propensity

Low Propensity to static down to 40% RH

Features

Available in 4 & 5m rolls.

Regular Nationwide delivery service

Wide range of colours to suit all, split up into: 'Colours', 'Naturals', 'Elements' and 'Stripes'.

General Information

Pile reversal:

All cut pile carpets can suffer from pile reversal and in certain instances this may become permanently bent or distorted for no specific reason that research has yet identified, giving areas of light and shade. This is also known as 'shading' or 'watermarking'. It is not a defect in manufacture, it only occurs in a small percentage of all carpets and no liability whatsoever can be accepted by the manufacturer in respect of it.

Pile pressure:

All cut pile carpets are liable to show light and dark patches resulting from disturbance of the pile created by foot traffic or brushing. This is a normal feature and is not a defect in manufacture and no liability whatsoever can be accepted by the manufacturer in respect of it.

Pale shades:

We include within our collection a number of pale shades. Primarily these are used as top or highlight colours. These more delicate shades will invariably tend to soil more quickly and give a lower of light fastness than the norm, and may show natural blemishes within the fibre that tend to be masked in deeper shades containing a greater quantity of dyestuff.

Maintenance

Hugh Mackay recommend that this carpet is maintained in accordance with an agreed maintenance schedule which should include the following:

i). Vacuum regularly. ii). Remove spills immediately. iii). Professionally clean as required.

Installation

To be installed in accordance with BS5323 'Code of Practice for the Installation of Floor Coverings' and NICF manual.

Pattern match cannot be guaranteed with any tufted patterned carpet. For quantity orders requiring colour matching, please state at the time of ordering. All samples may not be from the same production batch as current stock and therefore should be used as a guide and not as an exact match.

Colour variations: There may be colour variations/shade variations between each batch of carpet as well as with undyed materials.

Undyed Wool: Due to the inherent natural variations in undyed wool and the current blending techniques, there may be noticeable shade variations between the colours used in the same material and the actual production.

Hugh Mackay Carpets
Part of The Mackay Group
T: 01429 89255
E: sales@hughmackay.co.uk
www.hughmackay.co.uk



HUGH MACKAY
GREAT BRITISH CARPETS